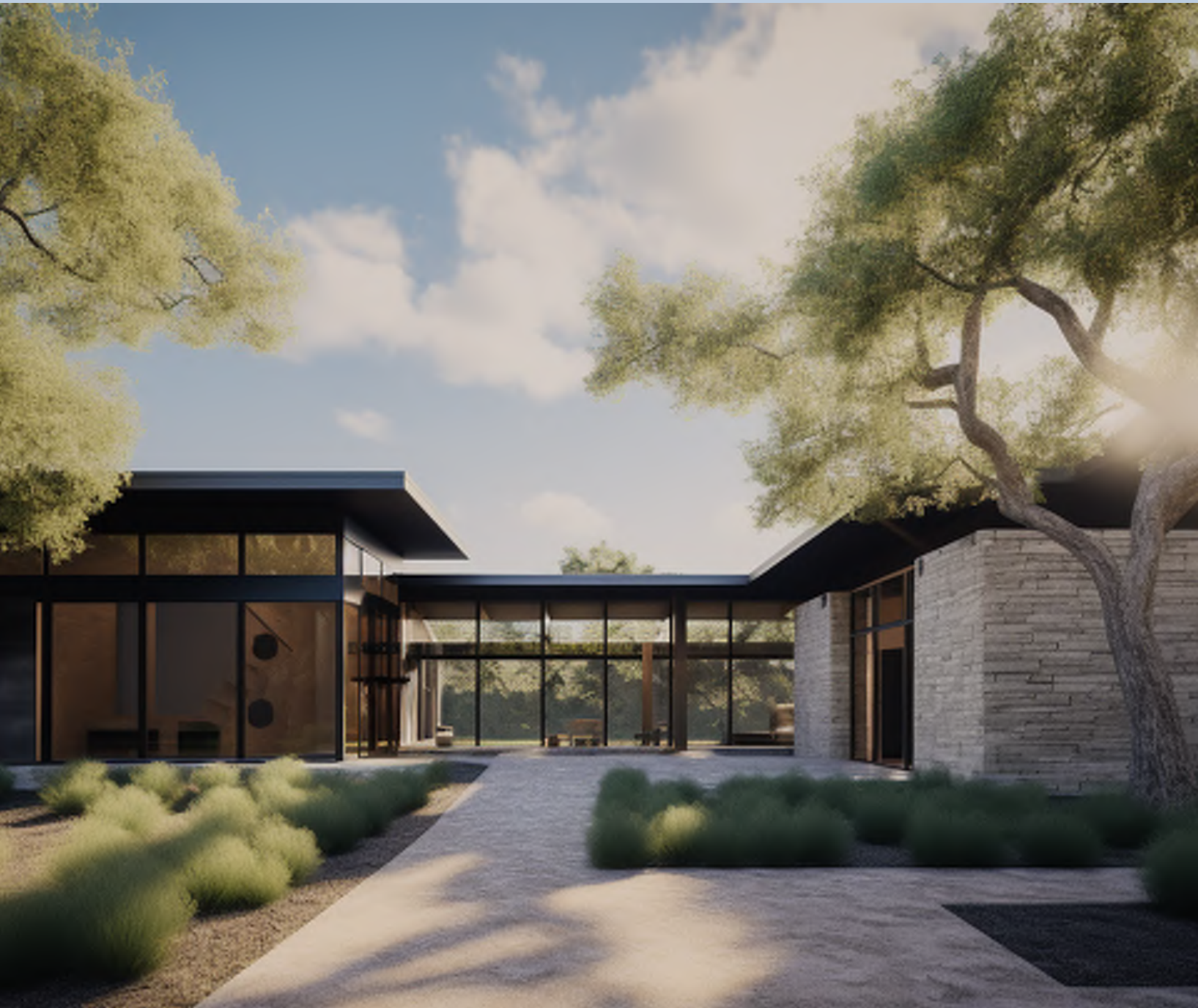


LIFESTYLE BY DESIGN

A CURATED COLLECTION OF WORKS & OVERVIEW



ANDREW WAGNER ARCHITECTS



THE SANTUARY
AT SPANISH OAKS

THE SANCTUARY AT SPANISH OAKS GOLF CLUB
A SIGNATURE COLLECTION OF EIGHT
PRIVATE LUXURY RESIDENCES





DRIFTWOOD

DRIFTWOOD GOLF & RANCH CLUB
DEVELOPER OFFERING OF EIGHT DESIGNS
FOR 30+ SINGLE FAMILY RESIDENCES,
IN ADDITION TO CUSTOM LOT DESIGNS





HAWKRIDGE

THE HAWKRIDGE PROPERTIES
SINGLE-FAMILY HOMESTEADS ON ACREAGE,
NESTLED IN THE TEXAS HILL COUNTRY
WITHIN A PRIVATE GATED COMMUNITY,
MINUTES FROM AUSTIN



LUXURY CUSTOM HOMES

ESTATES ACCROSS
THE TEXAS HILL COUNTRY
INCLUDING PRESERVATION RANCH,
SPANISH OAKS & DRIFTWOOD





Lifestyle By Design





HEADQUARTERS: AUSTIN, TEXAS

AUSTIN, A LEADING HOUSING MARKET,
OUT-PACING NATIONAL REAL ESTATE MARKETS.
THE IMAGINE AUSTIN 2040 STUDY FORECASTS AN ADDITIONAL
750,000 IN POPULATION, WITH THE CITY'S POPULATION SURPASSING
3 MIL., IN ADDITION TO ADDING 350,000 NEW JOBS.

LEADERSHIP

ANDREW WAGNER

FOUNDING PRINCIPAL, AWA

DREW, AS HE PREFERS BEING CALLED, IS A NATIVE MONTANAN, NOW A TEXAN. DREW HAS SUCCESSFULLY DELIVERED SKIN/ SKI-OUT AND GOLF COURSE AMENITIES AND RESIDENCES FOR HIS CLIENTÈLE ACROSS NORTH AMERICA, IN ADDITION TO HIS WORK AT A MULTINATIONAL CONGLOMERATE. THERE HE DROVE NET ZERO ENERGY, WATER AND WASTE IN THE DESIGN AND CONSTRUCTION OF COMMERCIAL AND RESIDENTIAL BUILDINGS.

ARIEL FISK-VITTORI

DIRECTOR OF DESIGN, AWA

ARIEL WAS BORN AND RAISED IN AUSTIN, TX. HE SPECIALIZES IN SUSTAINABILITY AND BUILDING SYSTEMS, BRINGING A DIVERSE RANGE OF SKILLS TO THE TEAM. HE HAS WORKED AT THE U.S. GREEN BUILDING COUNCIL, THE CLINTON CLIMATE INITIATIVE, AND ALL POWER LABS (A RENEWABLE ENERGY COMPANY). ARIEL HAS STRONG LEADERSHIP BACKGROUND, MANAGING LARGE INTERDISCIPLINARY TEAMS. ARIEL'S PASSION FOR HIS WORK IS DRIVEN BY A DESIRE TO INSPIRE AND CONNECT PEOPLE TO PLACE,



METHOD

HIGH PERFORMANCE DESIGN & CONSTRUCTION

WE USE CUTTING-EDGE TECHNOLOGY, BUILDING SCIENCE AND MATERIALS KNOWLEDGE TO CONCEIVE AND FACILITATE THE CONSTRUCTION OF LUXURIOUS BUILDINGS THAT ARE BOTH HIGH-PERFORMING AND AESTHETICALLY STUNNING. BY OPTIMIZING BUILDING PERFORMANCE, ENERGY EFFICIENCY, AND OCCUPANT COMFORT, WE CAN CREATE STRUCTURES THAT ARE BOTH LUXURIOUS AND SUSTAINABLE. OUR MISSION IS TO DELIVER BEAUTIFUL, BUT ALSO DURABLE AND LOW-MAINTENANCE BUILDINGS, PROVIDING OUR CLIENTS WITH A TRULY LUXURIOUS LIVING EXPERIENCE THAT STANDS THE TEST OF TIME.



MODEL

INTEGRATED APPROACH

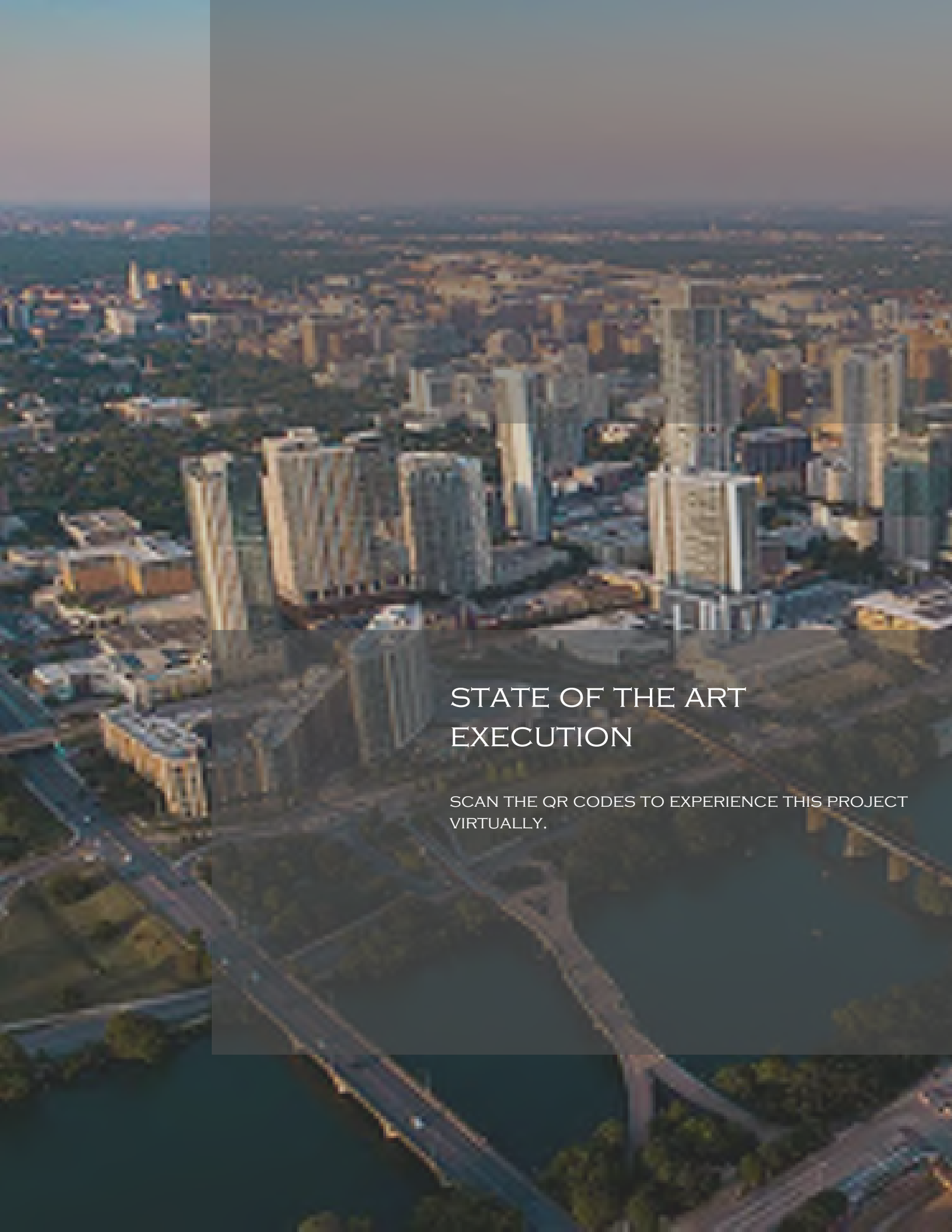
WE STRONGLY BELIEVE IN THE BENEFITS OF AN INTEGRATED TEAM APPROACH, COMBINING DESIGN AND CONSTRUCTION KNOW-HOW. IN DOING SO, WE ARE ABLE TO HARNESS THE EXPERTISE OF ALL TEAM MEMBERS FROM THE EARLY STAGES OF A PROJECT. THIS ALLOWS FOR A MORE COLLABORATIVE AND EFFICIENT PROCESS, RESULTING IN BETTER COMMUNICATION AND ULTIMATELY A SUPERIOR END PRODUCT.



EXECUTION

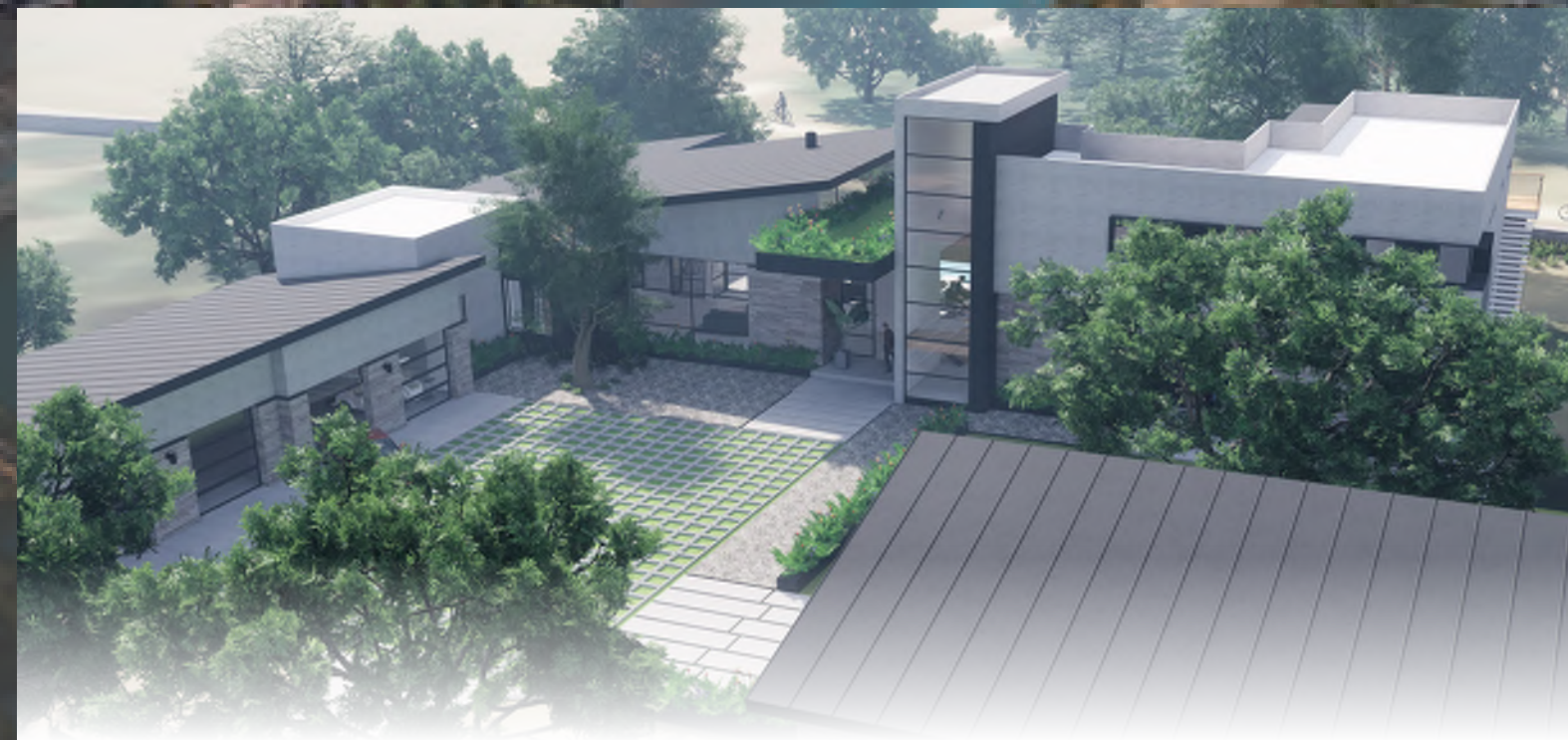
EXCEPTIONAL DESIGN & CRAFTSMANSHIP

WE BELIEVE THAT EXCEPTIONAL DESIGN AND CRAFTSMANSHIP ARE ESSENTIAL COMPONENTS OF ANY SUCCESSFUL PROJECT. THAT'S WHY WE ARE COMMITTED TO PHOTO-REALISTIC IMAGING FROM THE ONSET OF THE PROJECT, PROVIDING OUR CLIENTS VISION & INSIGHT INTO THE DESIGN PROCESS. THIS COMBINED WITH OUR APPROACH (METHOD & MODEL), THE MATERIALS & COMPONENTS COME TOGETHER IN A WAY THAT WILL NOT ONLY LOOK STUNNING, BUT WILL ALSO OPTIMIZE PERFORMANCE & FUNCTIONALITY, PROVIDING OUTLASTING COMFORT & LUXURY.



STATE OF THE ART EXECUTION

SCAN THE QR CODES TO EXPERIENCE THIS PROJECT
VIRTUALLY.



ENTRY



GREAT ROOM



PATIO



BALCONY



Andrew Wagner Architects
lifestylebydesign@andrewwagnerarchitects.com
512-537-5115



ANDREW WAGNER ARCHITECTS